

Other services from the “Studierendenwerk”

Social Counselling

If you have questions regarding personal or financial issues (except BAföG).

Legal Advice

If you have legal questions regarding your everyday life.

comeTOgether

Counselling office managed by students for students. Support regarding job applications. Give-Box.

Facilities for Families

Located in “Mensa Stadtmitte” and the “Mensa Lichtwiese”.

Emergency-Childcare

Short term hourly or daily care.

ITT – Intercultural Tutors Team

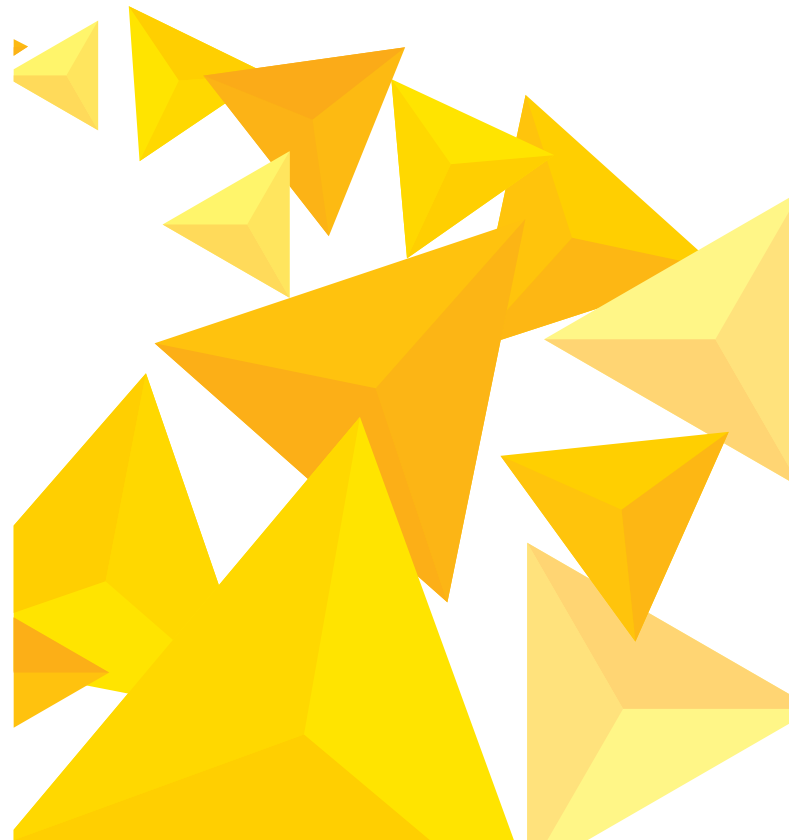
Excursions, Sightseeing, Workshops, Orientation and much more. From students for students.

Accident Insurance

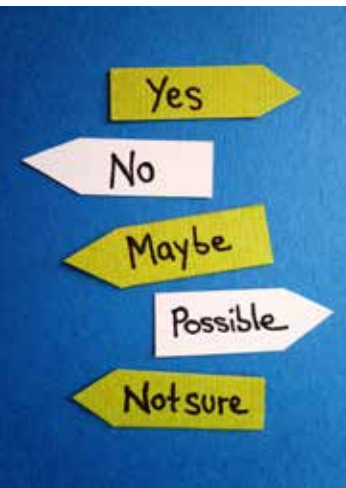
Students from TU and h_da are insured through us.

You can find more information here:

www.stwda.de/en > Counselling and Social Affairs



Psychological Counselling



Dear students,

we offer counselling regarding the following topics:

- test anxiety
- difficulties with concentration or work
- choice of study program or discontinuing your studies
- being unable to finish your studies/ anxiety about the future
- depressive moods
- anxieties
- family conflicts
- relationship issues
- sexuality
- finding it hard to make friends, loneliness
- high self expectations
- self-doubt
- various other psychological or physical symptoms

Important information for you

For students from the TU and the h_da our services are free of charge. Professional confidentiality is a precondition for our work and guaranteed. We have long-standing experience counselling students in a variety of questions and situations. In many cases a single conversation or a small number of sessions – if there are urgent problems – can be a substantial relief.

We offer

- individual counselling
- counselling with your partner, family or someone close to you
- group sessions (offers are only in German, if you are interested take a look at our website)

Contact

Studierendenwerk Darmstadt
Psychotherapeutische Beratungsstelle (PBS)
Steubenplatz 12 (1.OG)

Registration

takes place by phone: (06151) 16-29862
during our office hours.
You can find them at:
www.stwda.de/en > Counselling and Social Affairs >
Psychological Counselling

How to get there

We are located close to tram stop "Rhein-/Neckarstraße"